

DATE REVISED	DATE FILMED	DATE REVISED	DATE FILMED	FED. ROAD NO.	STATE	FED. AID PROJ. NO.	SHEET NO.	TOTAL SHEETS
3-8-83	5-6-83			6	ARK.	RS-A 640(1)		
4-18-83	6-1-83							
				JOB NO.	5714		3	30
① 5899 - Bridge Quantities-25663								

SCHEDULE OF BRIDGE QUANTITIES

BRIDGE NO. 5899	CODE NO. X071	NAME BLACK RIVER	UNIT OF STRUCTURE	ITEM NO.	* SP § 802	803	804	** SP § 807	** SP § 807	** SP § 807	± SP § 808	±± SP § 809	812
				ITEM	CLASS 5 (AE) CONCRETE	BOILED LINSEED OIL	REINFORCING STEEL (GRADE 60)	STRUCTURAL STEEL IN BEAM SPANS (A572-50)	STRUCTURAL STEEL IN PLATE GIRDER SPANS (A36)	STRUCTURAL STEEL IN PLATE GIRDER SPANS (A572-50)	ELASTOMERIC BEARINGS	PREFORMED JOINT SEALER	BRIDGE NAME PLATES (TYPE C)
				UNIT	CU. YD.	GAL.	LB.	LB.	LB.	LB.	LUMP SUM	LIN. FT.	EACH
				END BENT NOS. 1 & 26	9.70	0.2	521	1266					1
				391'-0" CONTINUOUS W-BEAM UNIT	382.94	32.3	88,255	254,381 258,326 △				32.8	
				745'-0" CONTINUOUS PLATE GIRDER UNIT	134.73	61.6	167,475		1,032,200 1,034,920 △	417,390			
				360'-0" CONTINUOUS W-BEAM UNIT	351.68	29.7	81,819	230,856 234,305 △				16.4	
				THREE-240'-0" CONTINUOUS W-BEAM UNITS	706.25	59.4	166,810	400,527 406,082 △				114.8	
				TOTAL FOR BR. NO. 5899 & JOB NO. 5714	2185.30	183.2	504,880	887,030 901,980 △	1,032,200 1,034,920 △	417,390	*** 1.0	164.0	1

* REFERS TO S.P. 802-5
 ** REFERS TO S.P. 807-10, 807-5, & SP JOB 5714-CONTROL OF MATERIAL AND FOREIGN STEEL OPTION △
 *** INCLUDES 68 FIXED & 48 EXPANSION SHOES
 ± REFERS TO SP 808-1
 ±± REFERS TO SP 809-1

DALLAS VIRE
 DESIGN SECTION SUPERVISOR

SCHEDULE OF BRIDGE QUANTITIES
 BLACK RIVER BRIDGE
 (JACKSONPORT)
 INDEPENDENCE & JACKSON CO.
 ROUTE 69 SEC. 4 & 5
 ARKANSAS STATE HIGHWAY COMMISSION
 LITTLE ROCK, ARK.

DRAWN BY: *MA* DATE: 2-2-83
 CHECKED BY: *DV* DATE: 2-4-83
 DESIGNED BY: DATE: SCALE: No Scale

BRIDGE NO. 5899

DRAWING NO. 25663

△ DELETED ELASTOMERIC BEARING SOLE PLATES FROM STRUCTURAL STEEL QUANTITY - 4-15-83 ARW

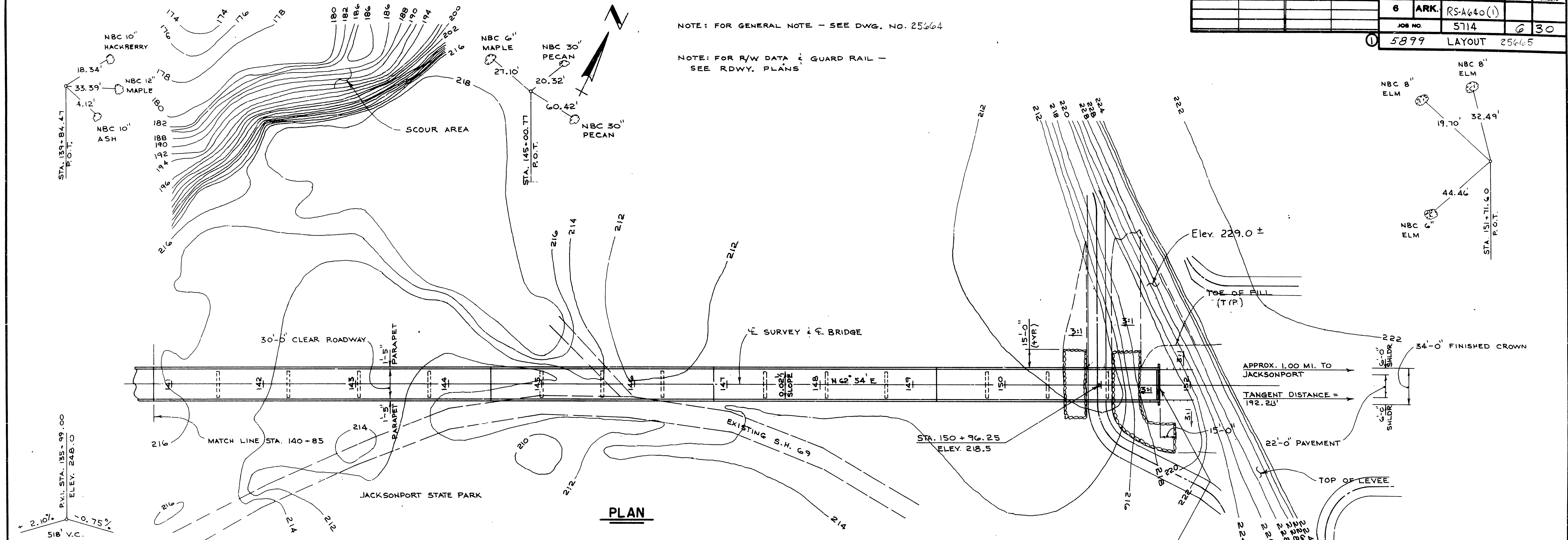
△ Changed SP 106-3 to SP JOB 5714-CONTROL OF MATERIAL AND FOREIGN STEEL OPTION - 3-8-83, *MA*

BRIDGE ENGINEER

DATE REVISION	DATE	DATE	DATE	FED. ROAD NO.	STATE	FED. AID PROJ. NO.	SHEET NO.	TOTAL SHEETS
				6	ARK.	RS-A640(1)		
				JOB NO.		5714	6	30
				5899	LAYOUT	25665		

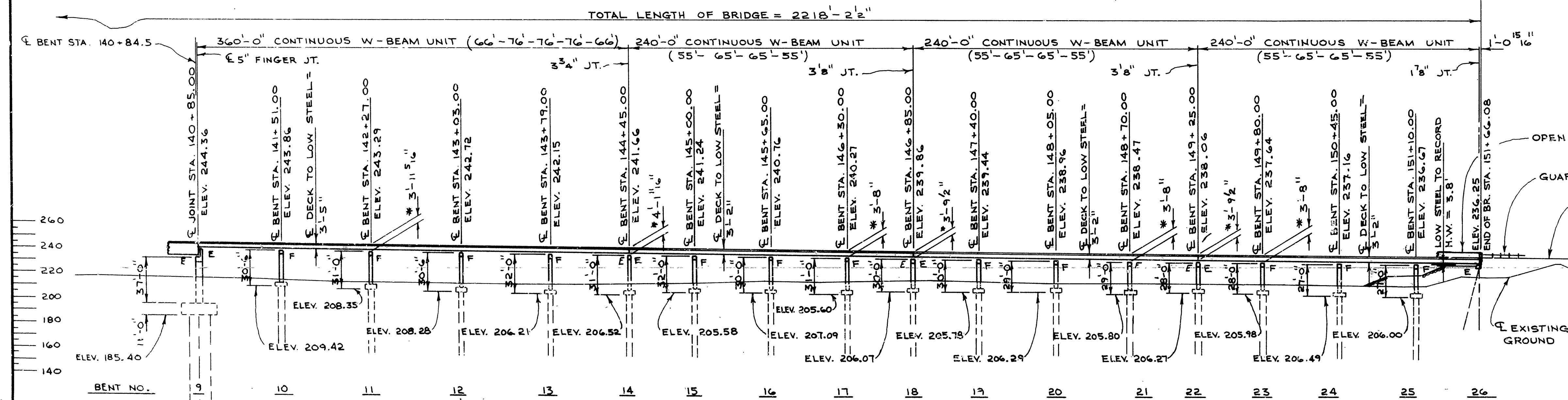
NOTE: FOR GENERAL NOTE - SEE DWG. NO. 25664

NOTE: FOR R/W DATA & GUARD RAIL - SEE RDWY. PLANS



VERTICAL CURVE DATA

* \bar{E} DECK TO LOW SIDE TOP OF CAP (TYP. FOR 360'-0" & 240'-0" CONTINUOUS W-BEAM UNIT)



NOTE: 50' PILES TYP. EXCEPT AS NOTED

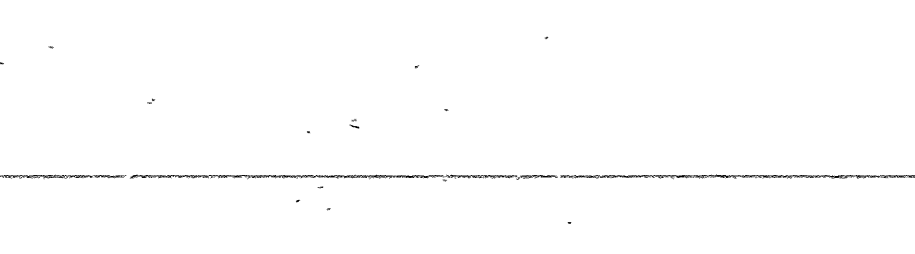
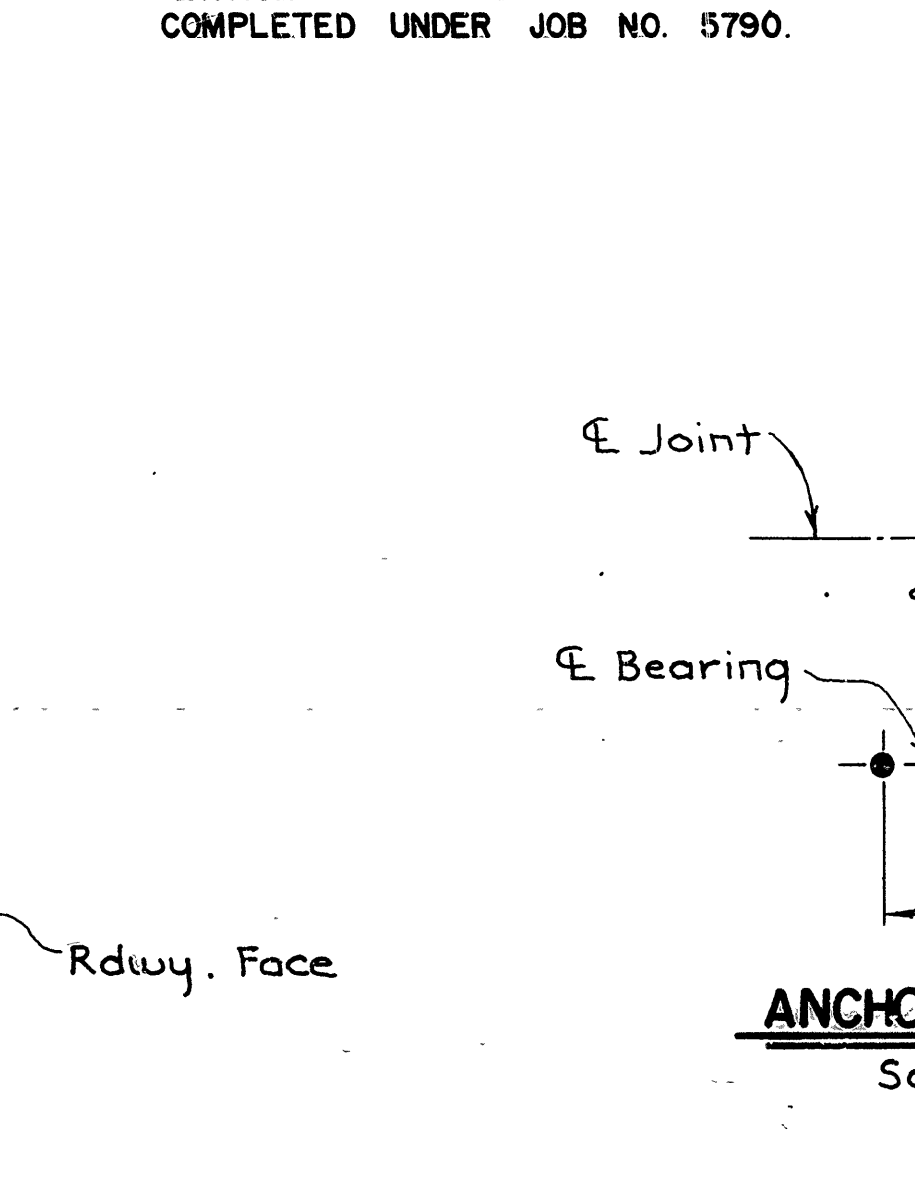
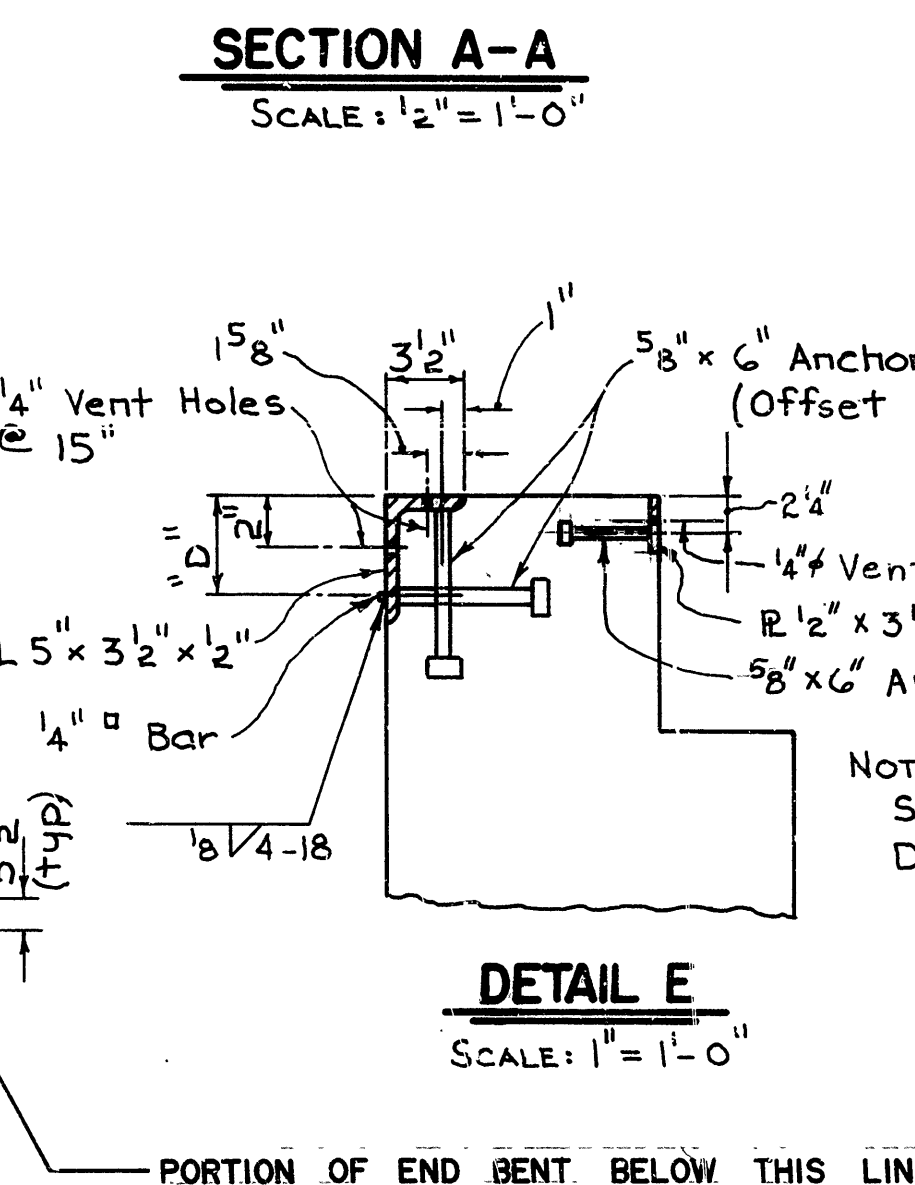
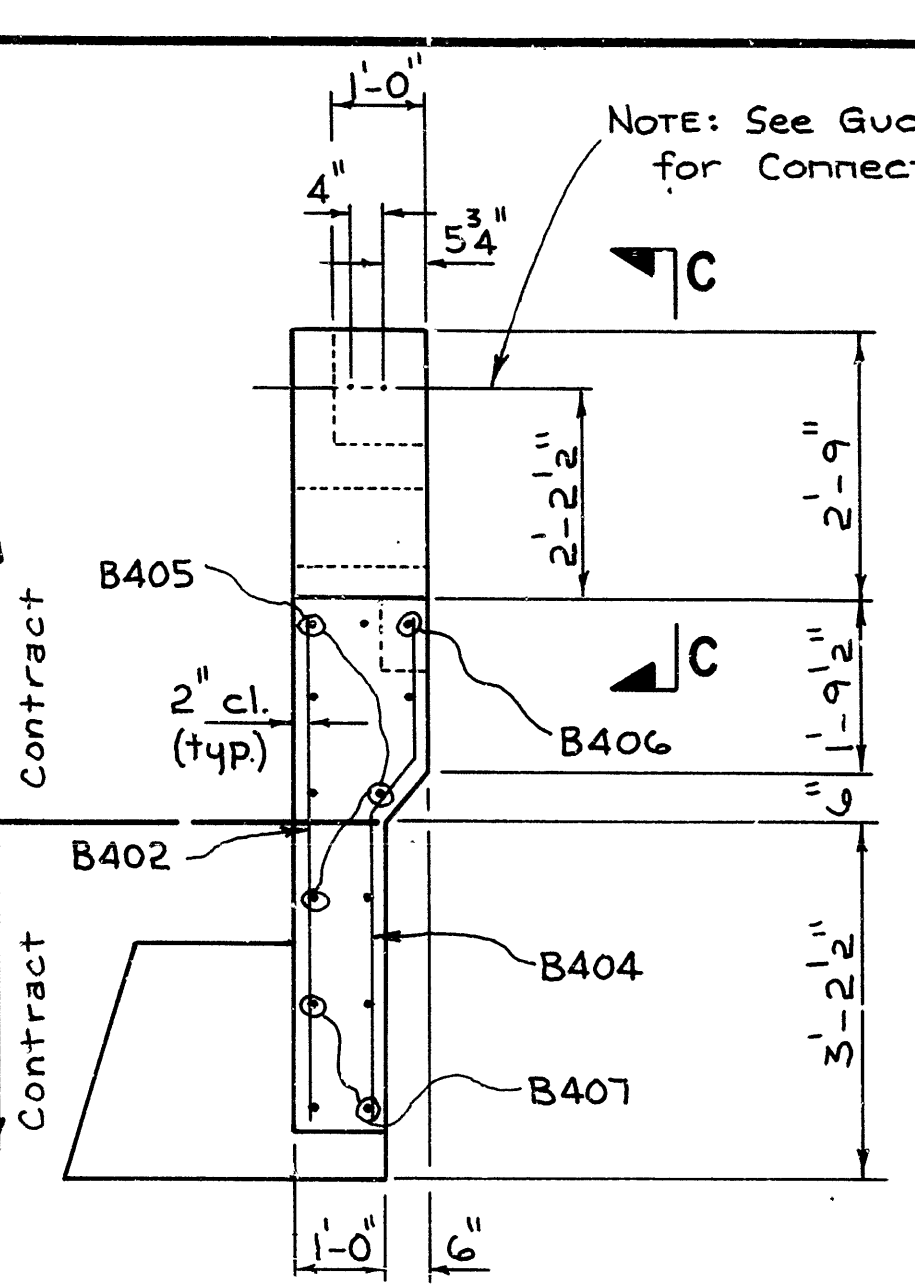
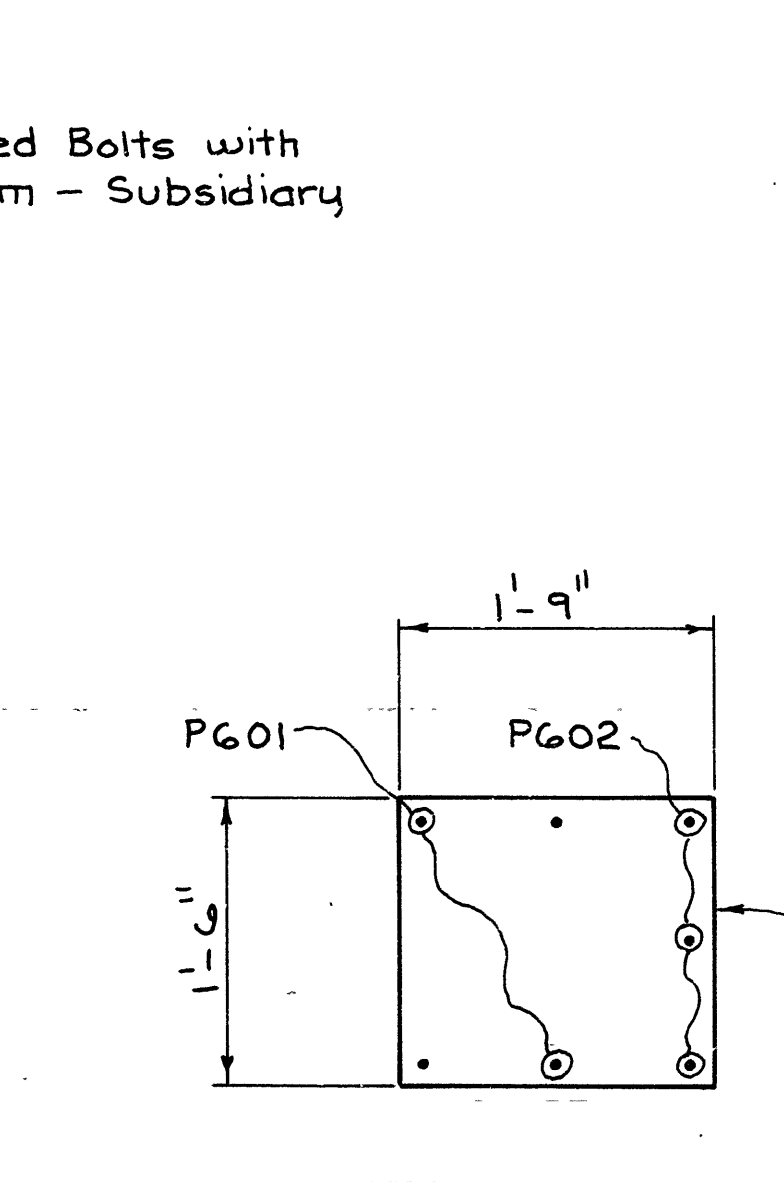
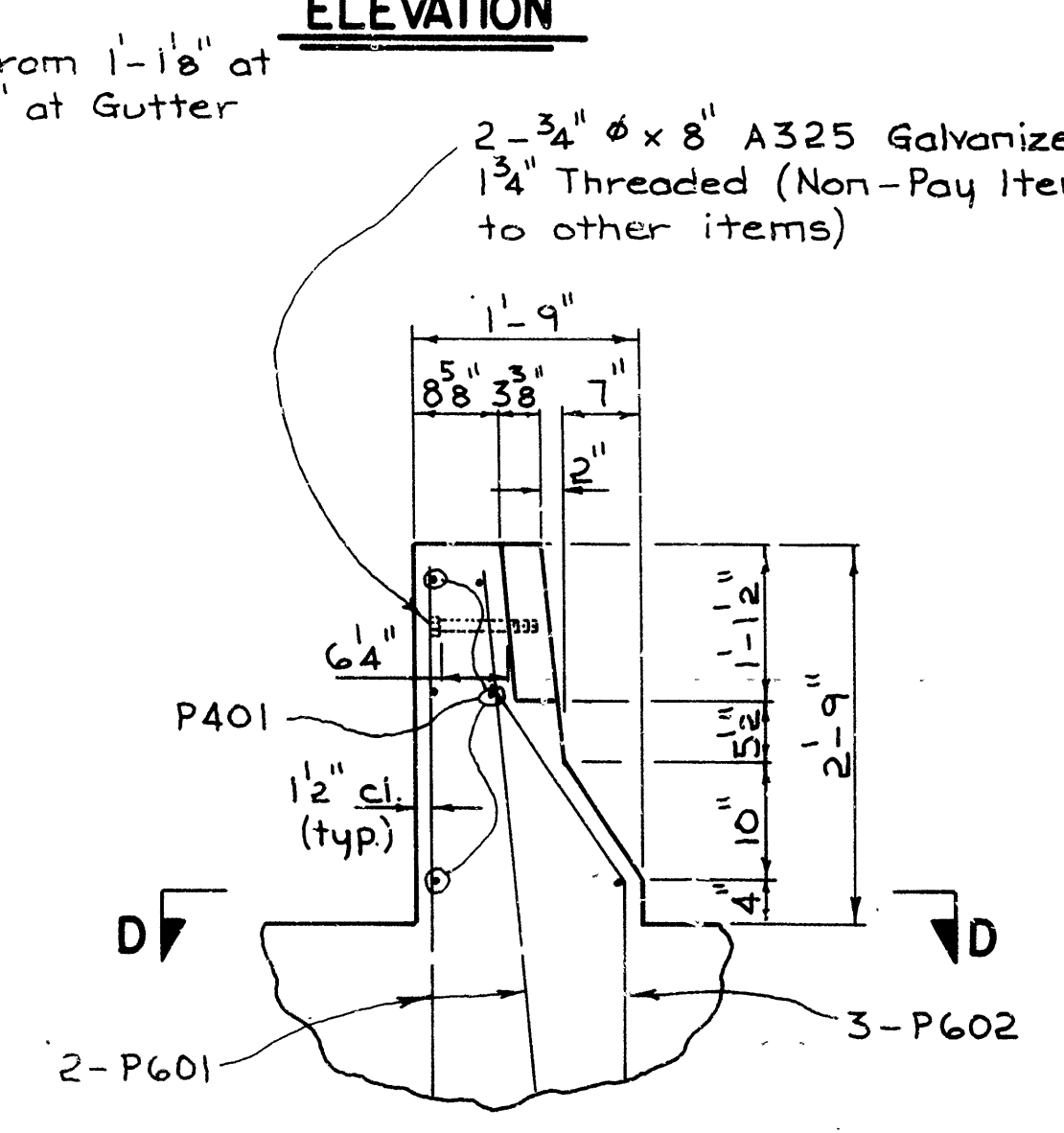
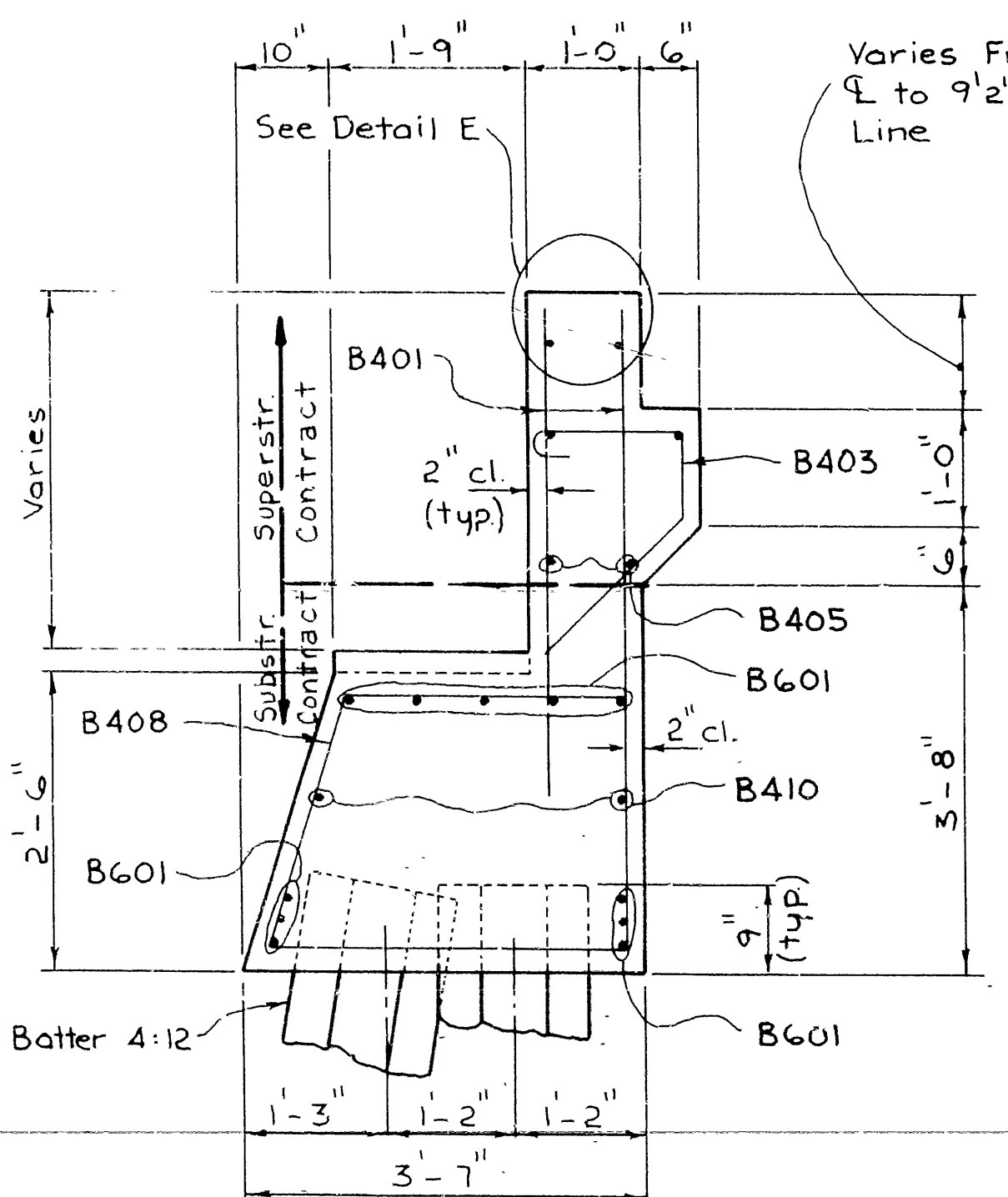
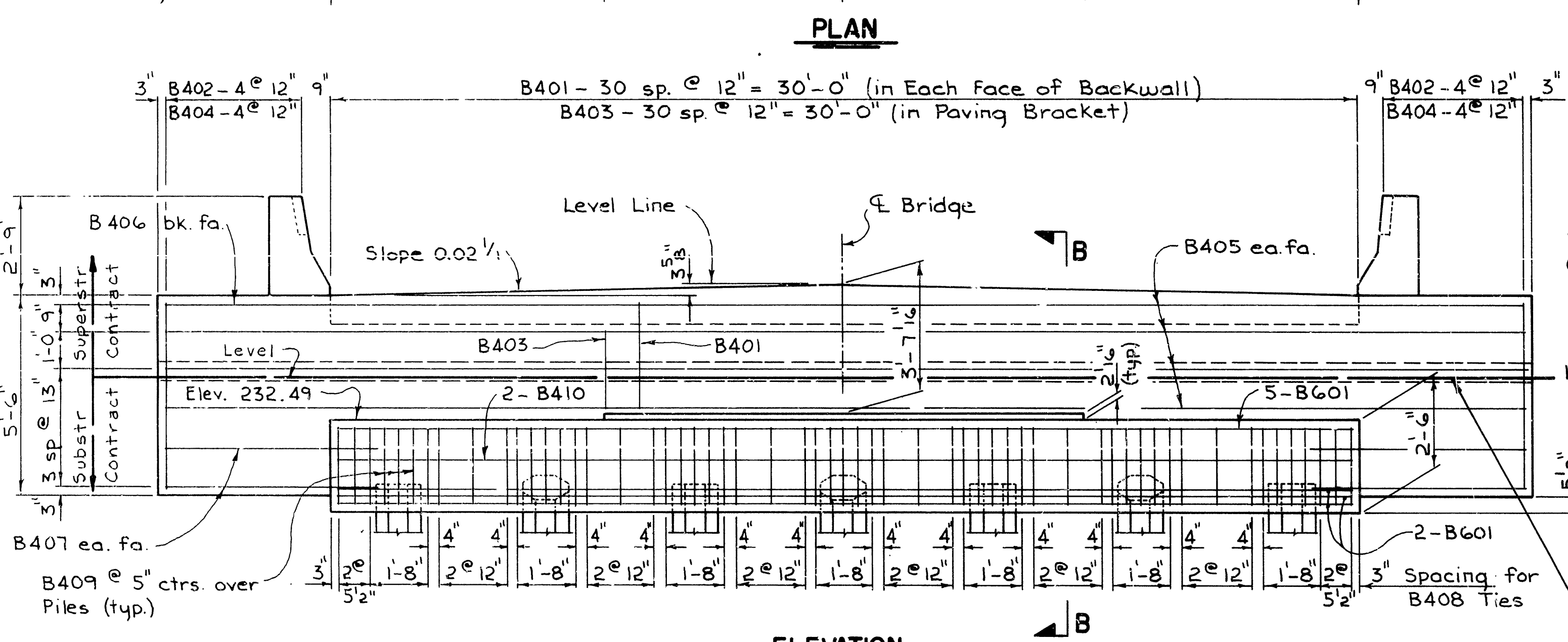
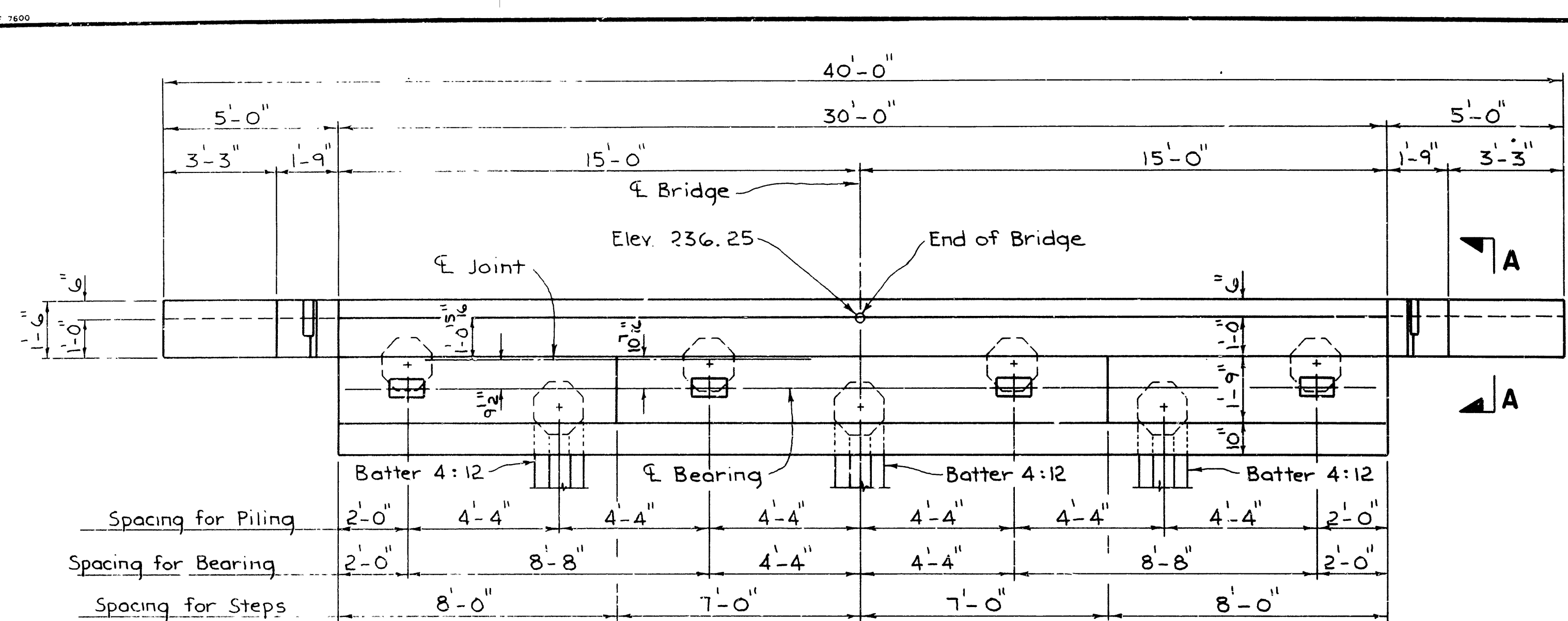
NOTE: FOR HYDRAULIC DATA - SEE DWG. NO. 25664

SHEET 2 OF 2
LAYOUT OF BRIDGE OVER
BLACK RIVER
BLACK RIVER BRIDGE
(JACKSONPORT)
INDEPENDENCE & JACKSON CO.
ROUTE 69 SEC. 4 & 5
ARKANSAS STATE HIGHWAY COMMISSION
LITTLE ROCK, ARK.

DRAWN BY: TEB DATE: 5-13-80
CHECKED BY: BO DATE: 5-14-80 SCALE: 1" = 50'-0"
DESIGNED BY: ARW DATE: April 80
BRIDGE NO. 5899 DRAWING NO. 25665

Neal Pinkerton
BRIDGE ENGINEER

ANCHOR BOLT LAYOUT
SCALE: 1 1/2" = 1'-0"



MARK	NO. REIN. JOBS	LENGTH	A	B	PIN. DIA.	BENDING DIAGRAMS
B401	62	5'-6"			STR.	
B402	10	5'-2"			STR.	
B403	31	3'-11"	1'-2"	1'-7"	2"	
B404	10	5'-4"	1'-6 1/2"	3'-1 1/2"	2"	
B405	6	3'-8"			STR.	
B406	2	4'-8"			STR.	
B407	8	6'-6"			STR.	
B408	36	10'-4"	2'-10 3/4"	2'-2"	2"	
B409	21	6'-6"	2'-10 3/4"	2'-2"	2"	
B410	2	2'-8"			STR.	
B601	11	2'-8"			STR.	
P401	12	1'-3"			STR.	
P601	8	4'-2"			STR.	
P602	6	3'-10"	1'-10"	2'-0"	3 3/4"	

GENERAL NOTES

ALL CONCRETE SHALL BE CLASS 50 AND SHALL BE POURED IN THE DRY. ALL EXPOSED CORNERS SHALL BE CHAMFERED 3/4" UNLESS OTHERWISE NOTED.

REINFORCING STEEL SHALL BE ASTM A615 OR A617, GRADE 60.

STRUCTURAL STEEL IN END BENTS SHALL BE A36 AND SHALL BE MEASURED AND PAID FOR AS STRUCTURAL STEEL IN BEAM SPANS, A572-50.

THE BACKWALL SHALL NOT BE POURED UNTIL THE BEAMS HAVE BEEN PLACED ON THE BENT CAP.

* NOT APPLICABLE THIS CONTRACT.

